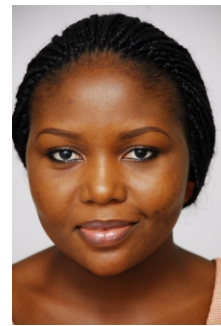


10,000 WOMEN



Goldman Sachs Women's Enterprise & Leadership (WEL) Program

"...The Goldman Sachs 10,000 Women Initiative provide scholarships for underserved women to attend EDS Certificate in Entrepreneurial Management (CEM)"

The Goldman Sachs 10,000 Women Initiative is collaborating with Pan-African University (Nigeria) in a global effort aimed at empowering 10,000 women in developing and emerging economies across the world.

Every year, scholarships are being awarded to under-served women entrepreneurs.

In Nigeria, the one year scholarship includes a Certificate in Entrepreneurial Management (CEM) and follow up services such as business advisory, consulting clinics and mentoring.

Application is hereby invited from qualified female business owners for the next round of the 2009 Goldman Sachs WEL Scholarship.

Applicants should log on to the link <http://nigeria.smetoolkit.org> then click on the 10000 women pictures to download and fill out the WEL Application form. Completed forms should be sent by email to:

Lfayomi@pau.edu.ng and copy eds4sme@gmail.com

Short-listed applicants will receive an invitation for an interview.

Selected Scholars will be required to pay N60,000 as their counterpart fee for the 12 months scholarship

Selection criteria will be as follows:

- a ▶ Company must be owned / managed by a woman
- b ▶ Should be a functional business (at least 3 months in operation)
- c ▶ Cannot afford CEM / Follow-up program
- d ▶ The Enterprise must have high growth potential
- e ▶ High local value added will be an advantage

Applications for the fifth round of scholarships must be received by **23rd of June, 2009**

APPLY NOW

Please visit: <http://www.10000women.org> for more on the 10,000 women initiative or Call Lola on 01-898 6060 or Damola on 07029376594 for general enquiries

Goldman Sachs